

examvue CR

For Veterinary



 Healthcare Solutions

Available Speeds:(Plate per hour)

- 76 pph
- 60 pph
- 40 pph
- 25 pph



Regulatory approvals:

- FDA 510(k) Premarket Notification
- CE (0120)
- UL, cUL, FCC
- Health Canada Certification

Specifications:

- 14x17 Cassette: Supports IP sizes 14x17" & 14x14
- 14x10 Cassette: Supports IP sizes 10x12"
**System includes two: 14x17" Cassette/IPs*
- Resolution: 100um/200um
- Data Capture:16-bits per pixel, 65,000 gray scale
- Dimensions (HxWxD): 4.6" x 18.3" x 27.7 (117 x 464 x 703 mm)
- Weight: 65lbs (30kg)

ExamVue CR Acquire Software:

- Intuitive GUI for Patient Entry
- DICOM Store/Send to any DICOM destination
- Measuring Tools, Annotations and Study Notes

Workstation and Monitor

- Windows 7 Professional 32 Bit
- Intel Processor
- 500 GB
- 4 GB RAM
- 16x CD/DVD +/- RW
- 21.5" LED Monitor

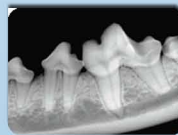
**JPI Reserves the right to change specification without notice*

Features

- Cost savings by eliminating film and chemistry
- Increase productivity
- High quality images
- Wall mount option for limited space
- Automatic cassette and plate handling

Dental Upgrade (optional)

- A full range of imaging plate sizes is available including 0, 1, 2, 3, and 4c with template cassette



JPI Healthcare Solutions Inc.
52 Newtown Plaza Plainview NY 11803
Toll Free: 888-574-2001
Tel: 516-513-1330
Fax: 516-513-1331
www.jphealthcare.com

Authorized Dealer